

M*Ci*

Guardrail

Muar Cathay Industries Sdn. Bhd.



SIRIM

Certified to AASHTO M 180-00 (2004)
Certification No : PM078701



Saving lives out of steel.

Supply | Installation | Maintenance



Introduction

Muar Cathay Industries S/B (MCI) is incorporated in year 1998. We specialize in fabricating metal products, steel structure, aluminium architectural products, commercial signboard and window covering product.

The company provides ONE-STOP-CENTRE to meet the future demand and has form a strong team with experienced designer and technical personnel to fulfill customer's requirements.

To the change of the trends in special industry field, we are investing in manufacturing metal door and window frame, roller shutter, custom made metal or aluminium ceiling and highway guardrail.



The Associate Companies

Mci Guardrail Construction Sdn. Bhd. (124428-P) (Formerly known as Aicon (M) Sdn. Bhd.)

- Incorporated in year 1984, the achievements of company in the sector of building and construction has completed project such as Housing Estate, Factories and Resort.

Mci Guardrail & Engineering (S) Pte.Ltd. (201216236Z)

- Incorporated in year 2012, Services on business related to MCI Malaysia in Singapore market.



Services & Installations

1 Steel

- Gutter Canopy & Awning
- Fabricate & Install Steel Portal Frame
- Metal Perforation, Cutting & Bending
- Metal Roofing, Gi Purlin, Ridge Capping & Flashing

2 Guardrail

- Guardrail Post, Packer & Beam

3 Aluminium Architectural Products

- Strip Ceiling, Tile Ceiling & Custom Made Ceiling
- Wall Cladding, Curtain Wall & Aluminium Composite Panel Cladding
- Aluminium Partition, Shop-front, Door & Window C/w Glass
- Venetian Blinds & Vertical Blinds

4 Commercial Signboard



Highway Guardrail Product Features & Application

Mci Guardrail is a widely accepted highway safety product used around the world as a Safety System On the road. Our product has been tested and complied to American Highway Safety Standard AASHTO-M180-00. It is not only used as traffic delineation but also as a protection barrier in the event of vehicular loss of control.

Installed in the median of a divided highway, or along the curb lanes of highways and two-lane roads, the Continuous Steel guardrail absorbs the shock of vehicle impact when it lost its control and guides the vehicle in the direction of the traffic flow. The net result of this system is to reduce the tendency for a lost control vehicle to rebound into the path of following or on-coming traffic.

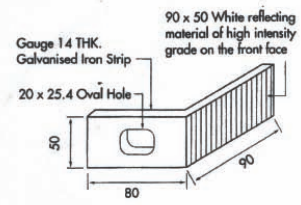
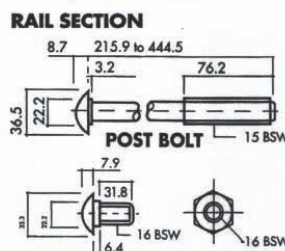
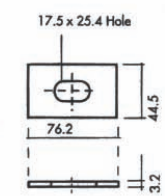
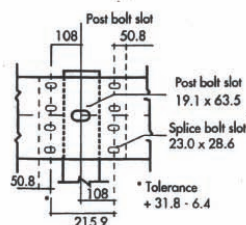
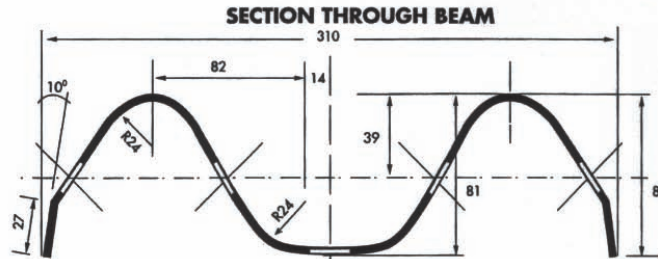
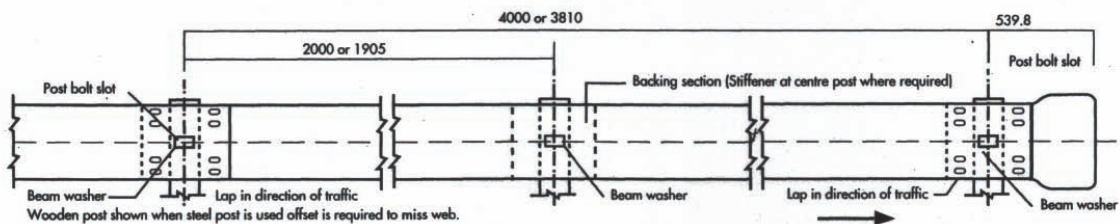
- Longitudinal strength due to the continuous nature of W Beam
- Low maintenance / Impact resistance / Durability
- Acceptance - widely accepted by highway departments for many decades
- Versatility - can be supplied in various configurations
- Various accessories available designed to suit particular site conditions
- Economical - both materials and installation



Specification & Technical Data

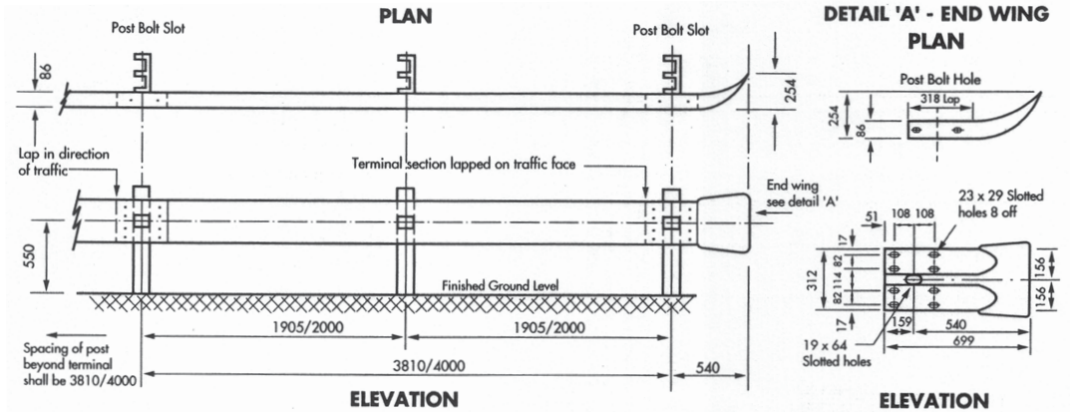
- 1 Base Metal specification to AASHTO M180-00
 Minimum Yied Strength : 345 N/mm2
 Minimum Tensile Strength : 483 N/mm2
 Minimum Elongation : 12%
 Material Thickness : 2.5mm~2.6mm
- 2 Galvanising specification to AASHTO M180-00
 - 1100g/m2 minimum single spot test
 - 1220g/m2 triple spot test
- 3 MCI dimension to AASHTO M180-00

Type	Effection Length (mm)	Overall Length (mm)	Nominal Uncoated Thickness (mm)	Weight (kg)
1	3810	4128	2.67	44.0
2	4000	4318	2.67	46.0

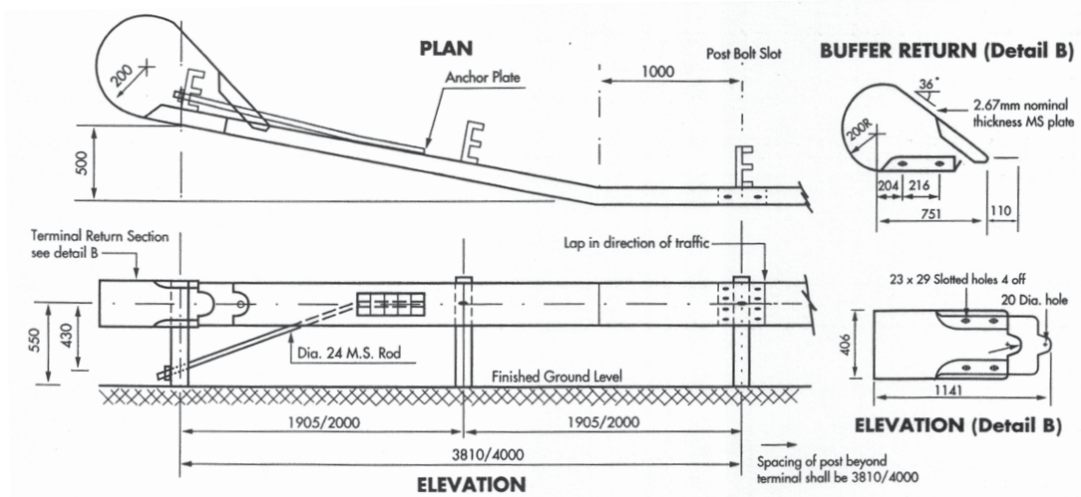


Note: All dimension are subject to manufacturer's except where allowable tolerance are shown. All dimension are millimetre.

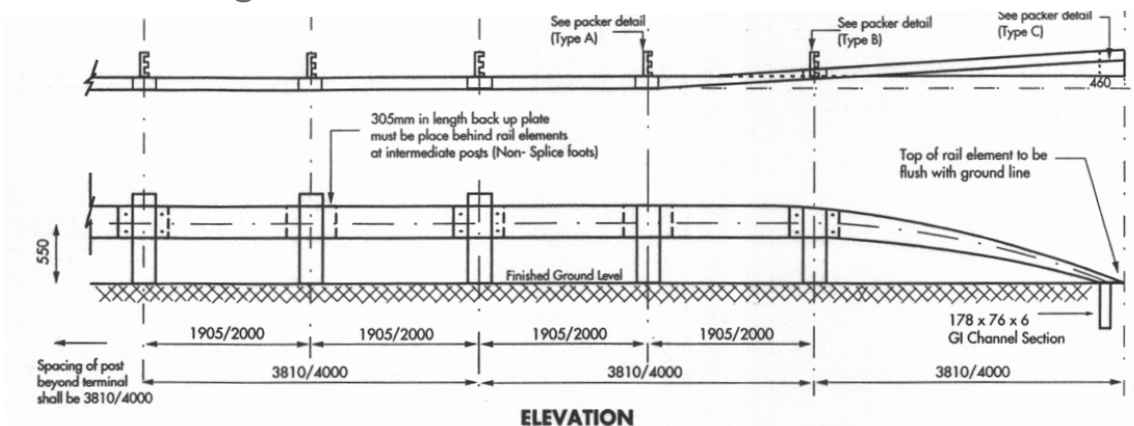
Terminal Unit (Type 1)



Terminal Anchorage Unit or Flare End (Type 2)

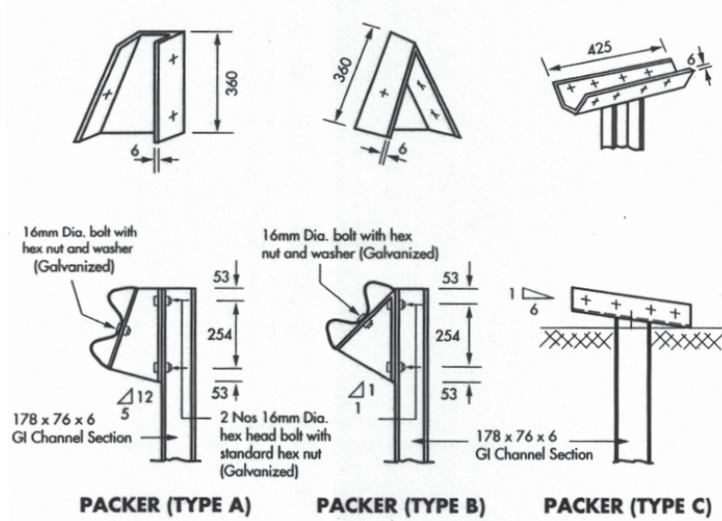
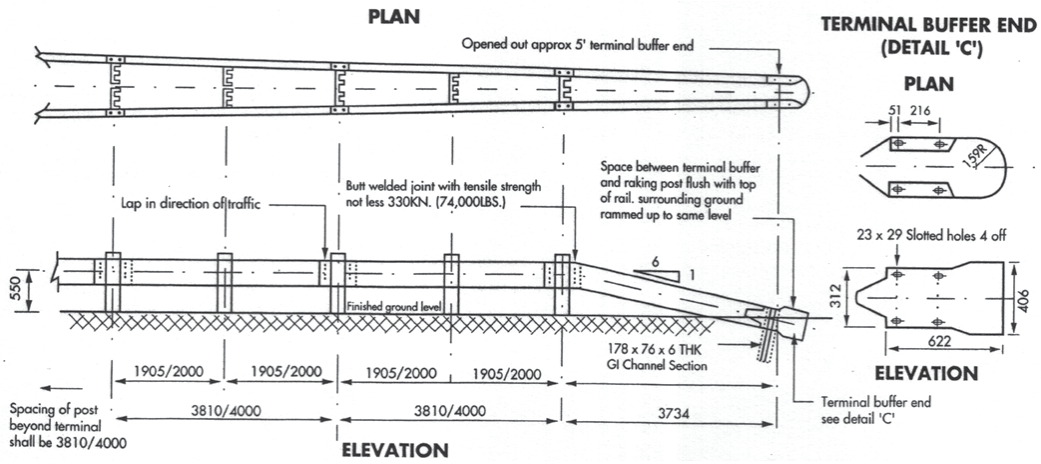


90° Twist Terminal Anchorage Unit (Type 3)

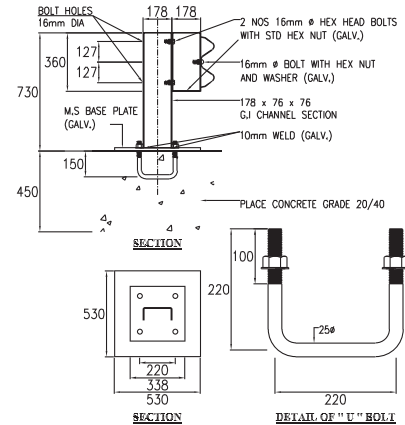
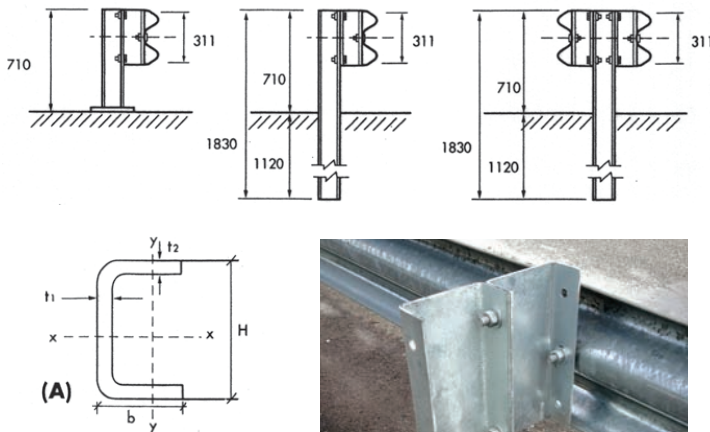




Terminal Section 1:6 (Type 4)



Post



Guardrail for Rock Foundation

Type	H x B x t2 x T1 (mm)	Unit Weight (kg/m)	Section Area (cm ²)	Moment of Inertia		Section Modulus	
				Lx (cm ²)	Ly (cm ⁴)	Sx (cm ³)	Ly (cm ²)
A	C178 x 76 x 6 x 6	14.3	19.08	903.5	102.5	101.5	52.0

M*Ci*

Muar Cathay Industries Sdn. Bhd.

www.cathay.com.my



Muar Cathay Industries Sdn. Bhd.

(465957-V)

Pos 764, Lot 2407, Pt Bakar Darat,
Jalan Sri Tanjong, 84010 Muar,
Johor, Malaysia.

Tel : +6 06 981 3399

Fax : +6 06 981 3649

Email: admin@cathay.com.my

M*Ci* Guardrail & Engineering (S) Pte. Ltd.

(201216236Z)

10 Anson Road, #31-10,
International Plaza.
Singapore 079903.

Tel : +65 9763 6220

Fax : +65 6848 4815

Email: tanth@cathay.com.my
